

14th World Prune Conference
Canberra, Australia
Tuesday, November 5th, 2013

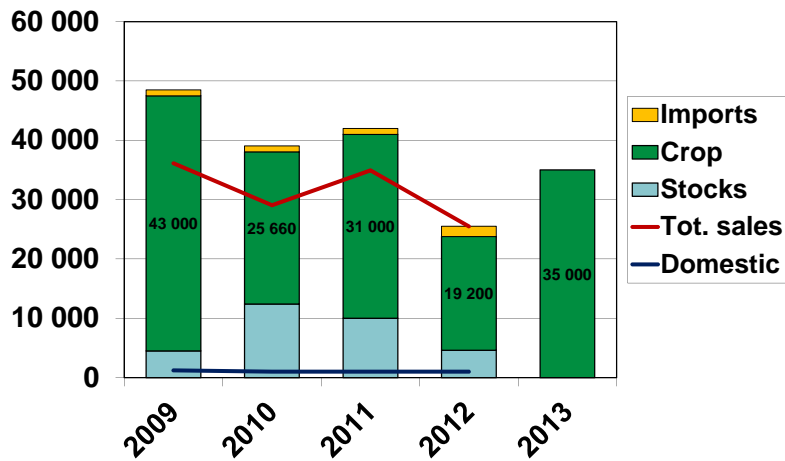
World Prune Production: Statistical Update

Christian Amblard

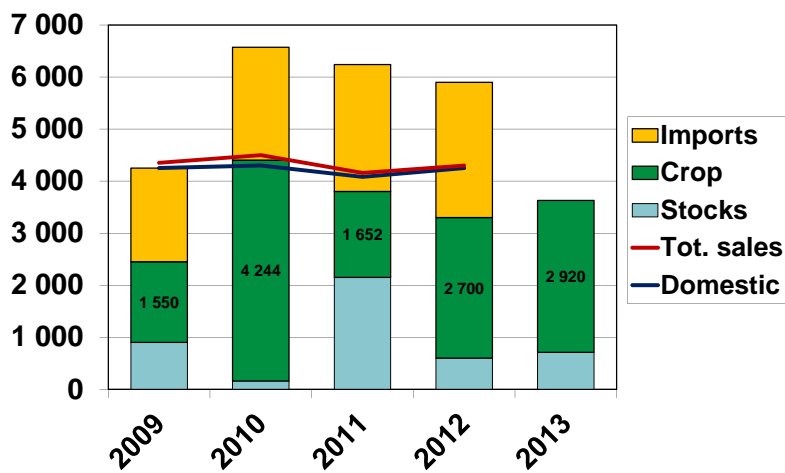
- 1 . Production Statistics



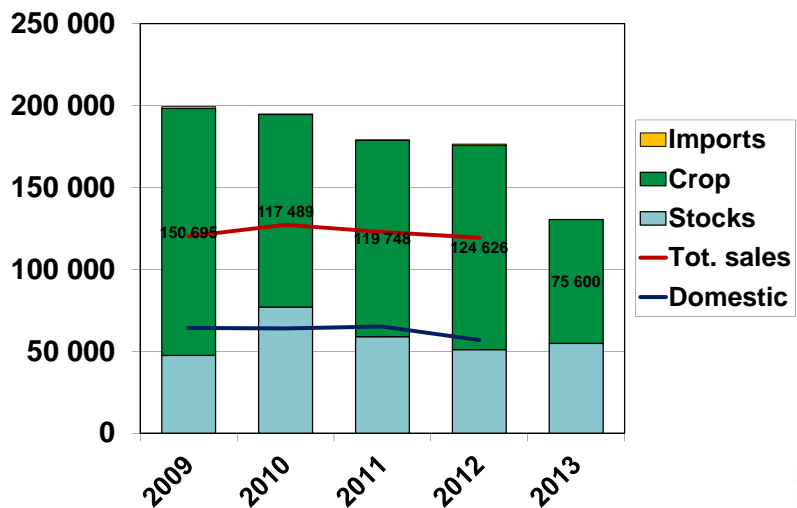
Argentina



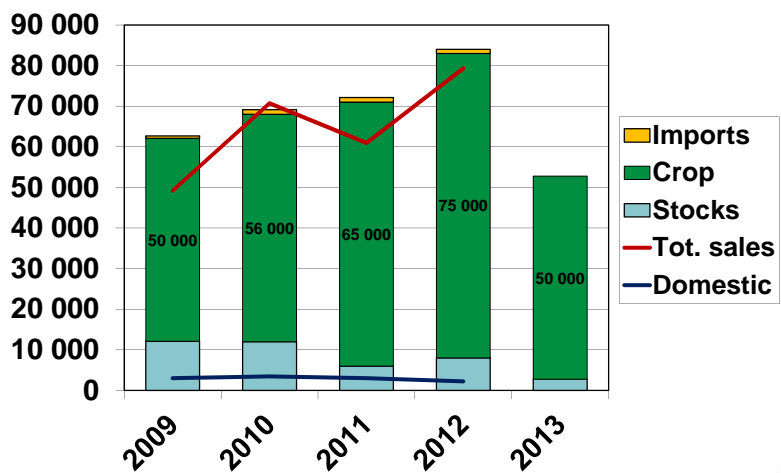
Australia



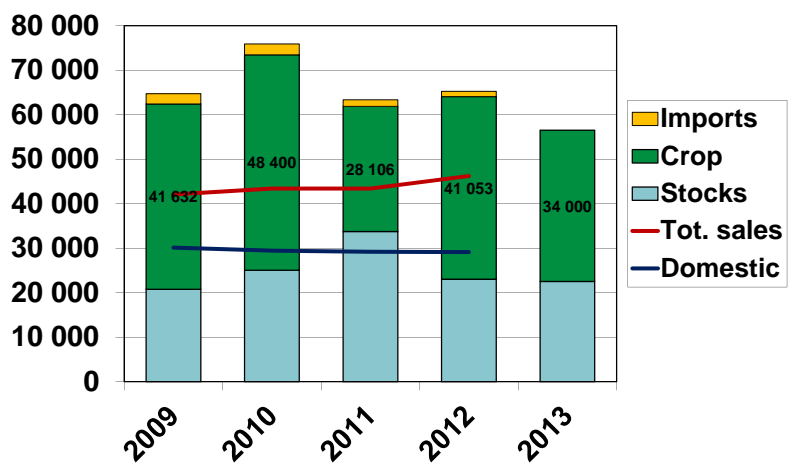
California



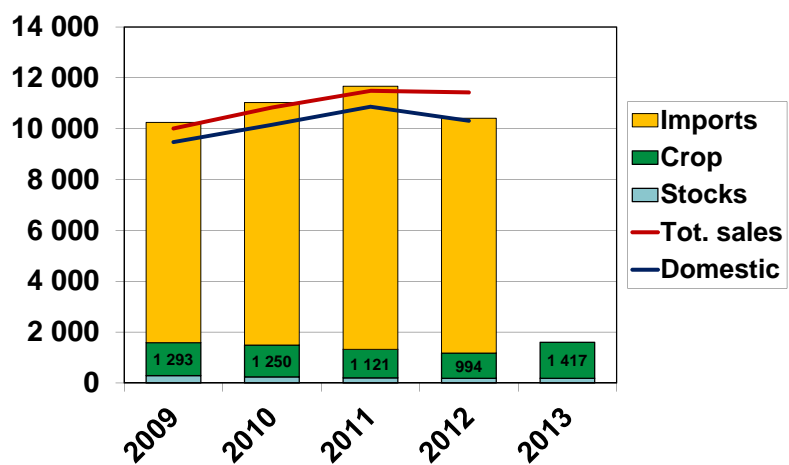
Chile



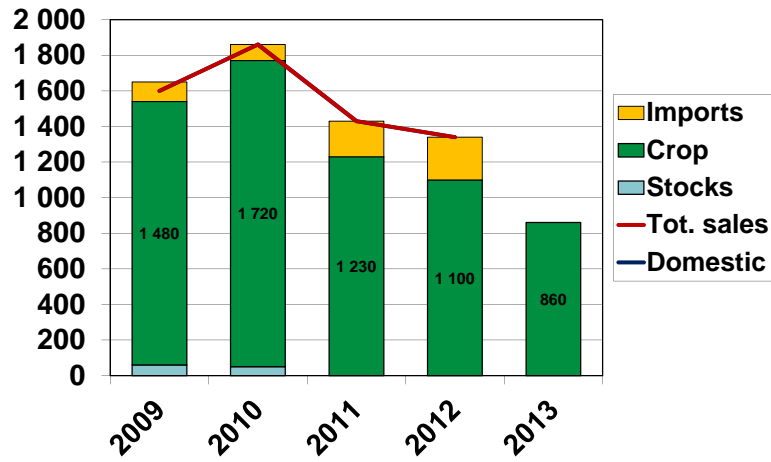
France



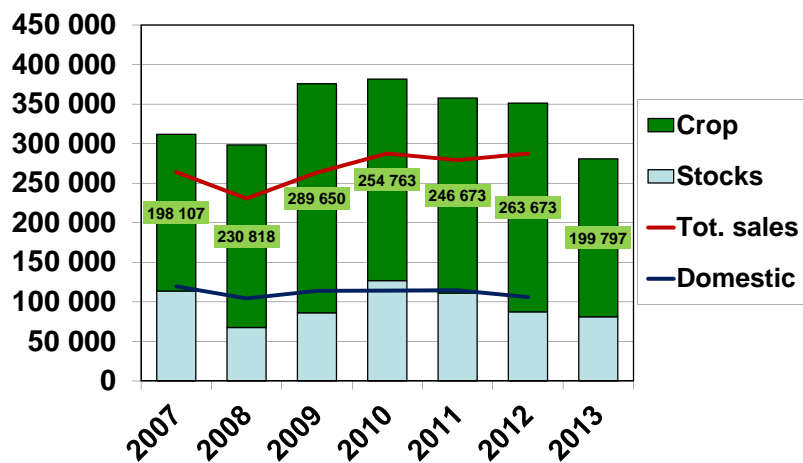
Italy



South Africa



Total World

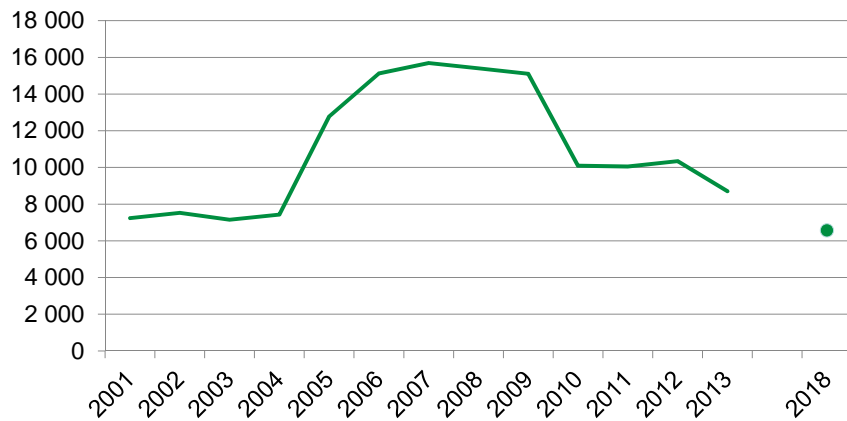


- 2 . Prune Orchard

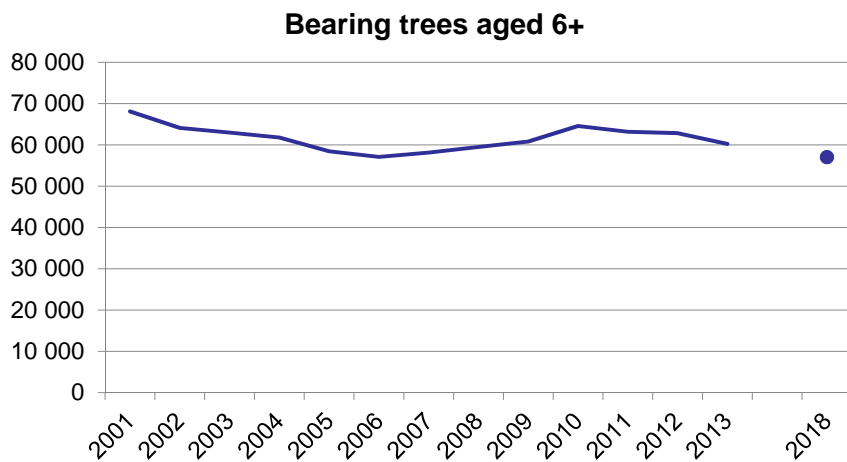


Evolution of Plantations

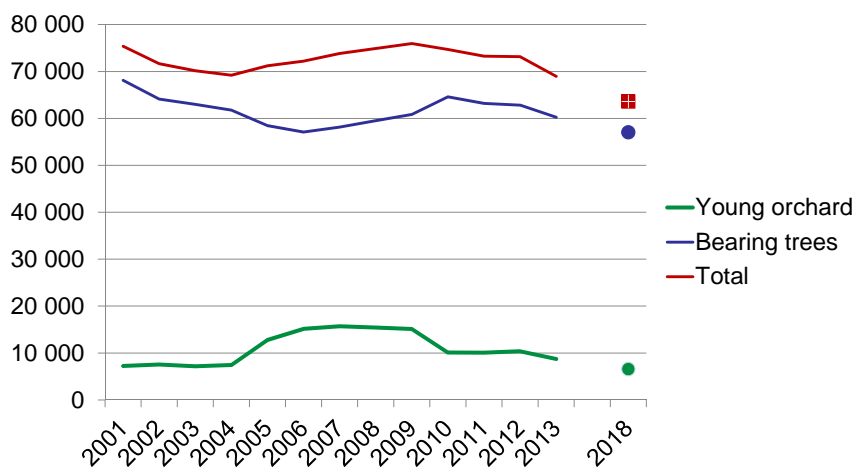
Young orchards aged 0-5



Evolution of Bearing Orchards



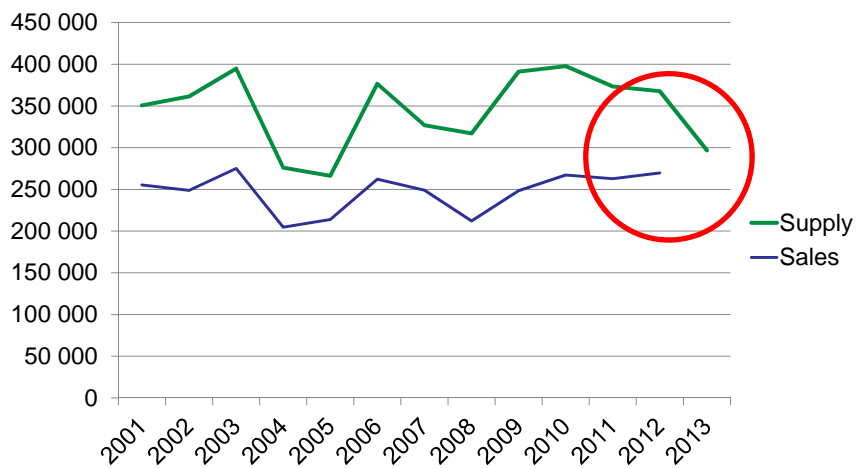
Evolution of Orchards



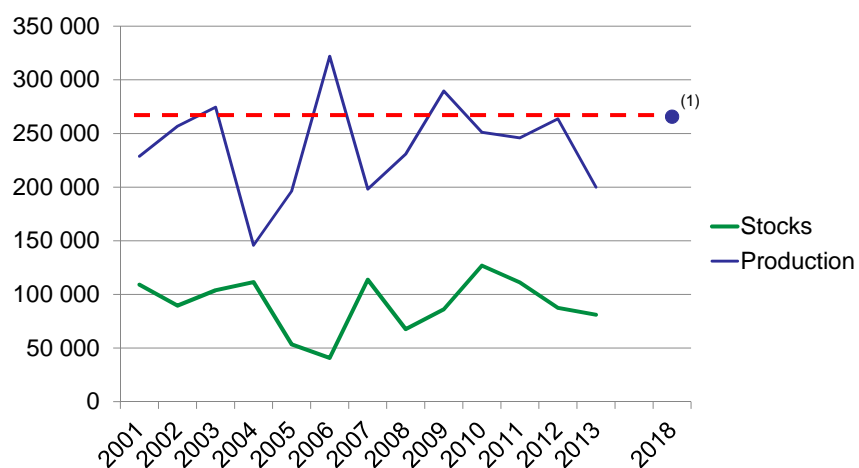
- 3 . Outlook



Evolution of World Supply



Evolution of World Production



(1) Normal World production without any climatic accident



Summary

- The World prune orchard looks now stabilized
- The young orchard decreased by 6400 ha in 5 years to represent now 13% of the total area. It is forecast to decrease by 2000 ha more in 2018, so young trees will reach 10% of total
- In 2018 the now-stabilized bearing orchard will have come beneath its pre-crisis level but with younger and more productive trees
- So can we expect a stabilized production for the next 5-7 years



**INTERNATIONAL
PRUNE ASSOCIATION**

Christian Amblard, November 5th, 2013